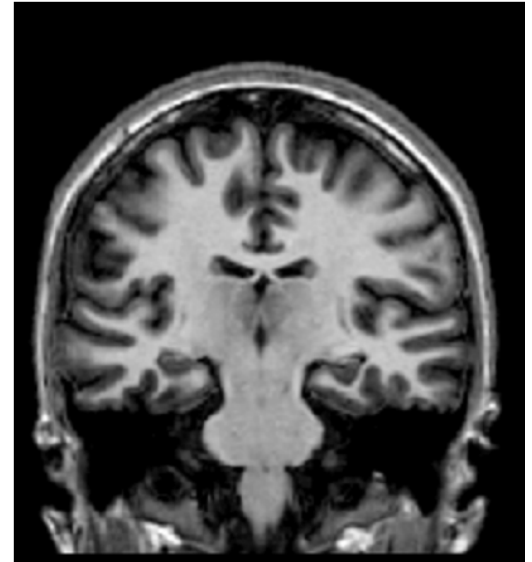


# **TAKE PART IN BRAIN RESEARCH!**



## **ATTENTION: SEEKING KIDS AND YOUNG ADULTS AGES 3 TO 20**

Across the country, researchers are studying the relationship between genes and brain development in typically developing children and young adults and to develop a database for future research. This database will help scientists and doctors better understand pediatric brain disorders.

- WHO:** HEALTHY, TYPICALLY DEVELOPING CHILDREN AND YOUNG ADULTS, AGES 3-20
- WHAT:** 2 sessions of learning and memory tasks, a saliva sample, and a Magnetic Resonance Imaging (MRI) scan of the brain. Appointments last about 2.5 hours per session and occur over one or two consecutive days.
- WHERE:** Kennedy Krieger Institute, and centers nation-wide.
- BENEFIT:** There are no significant risks involved in this study and there are no direct benefits.
- COMPENSATION:** \$50 and a picture of your brain
- CONTACT:** The PING study coordinator at 443-923-2793 or  
PING@kennedykrieger.org