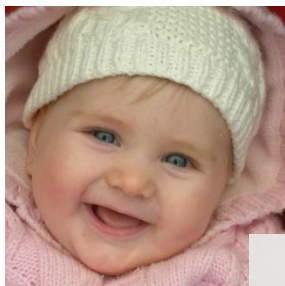


# Seeking typically developing younger siblings (ages 3 months - 8 years) with no family history of developmental disorders to participate in a child development study:



Dr. Rebecca Landa, Principal Investigator  
KENNEDY KRIEGER INSTITUTE  
REACH Research Laboratory

You and your child are invited to participate in a research study of cognitive, language and social development in children.

Study Number: NA\_00038069

## **WHAT ARE THE BENEFITS OF PARTICIPATING?**

- Learn about your child's development
- Free developmental research assessments (language, learning, and social)
- Improve understanding about early development and developmental disorders
- There are no direct medical benefits.
- Upon completion of each annual testing, families will be compensated \$50 for participation.

## **WHAT WILL BE INVOLVED?**

- Assessment of your child's development at our Research Center (two 3 to 4-hour visits; 2-2.5 hours of testing for 3 and 6 month olds).
- One parent interview may be conducted over the phone.
- We will ask you to fill out some parent questionnaires about your child's cognitive, emotional, and behavioral development. We estimate that these will take about 2 hours to complete.
- The sessions will be video recorded for later scoring.
- Your child's medical records may be requested.

## **WHAT ARE THE RISKS?**

- Your child may get tired, bored or frustrated. Breaks will be taken as often as needed. If necessary, testing can continue on an additional day.
- Discomfort with personal questions during the parent interviews is another possible risk.
- Because of the time commitment involved, we will be flexible in scheduling appointments.

## **HOW CAN YOU HELP?**

You can help by volunteering for our study. If you have a typically developing child (3 months - 8 years) and have no family history of a developmental disorder, please call 1-877-850-3372, or e-mail at [reach@kennedykrieger.org](mailto:reach@kennedykrieger.org)